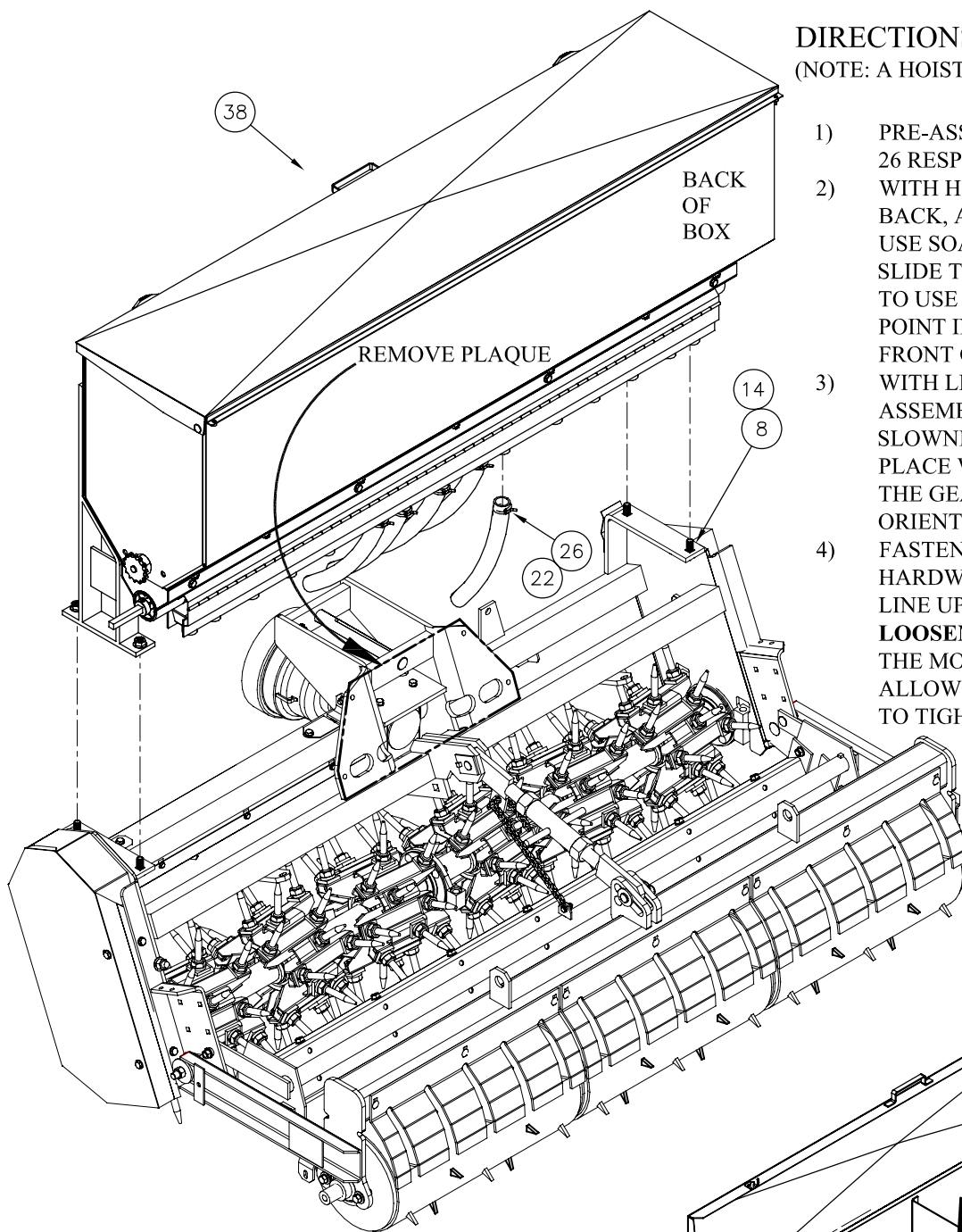


DEALER ASSEMBLY INSTRUCTIONS

SB82i001

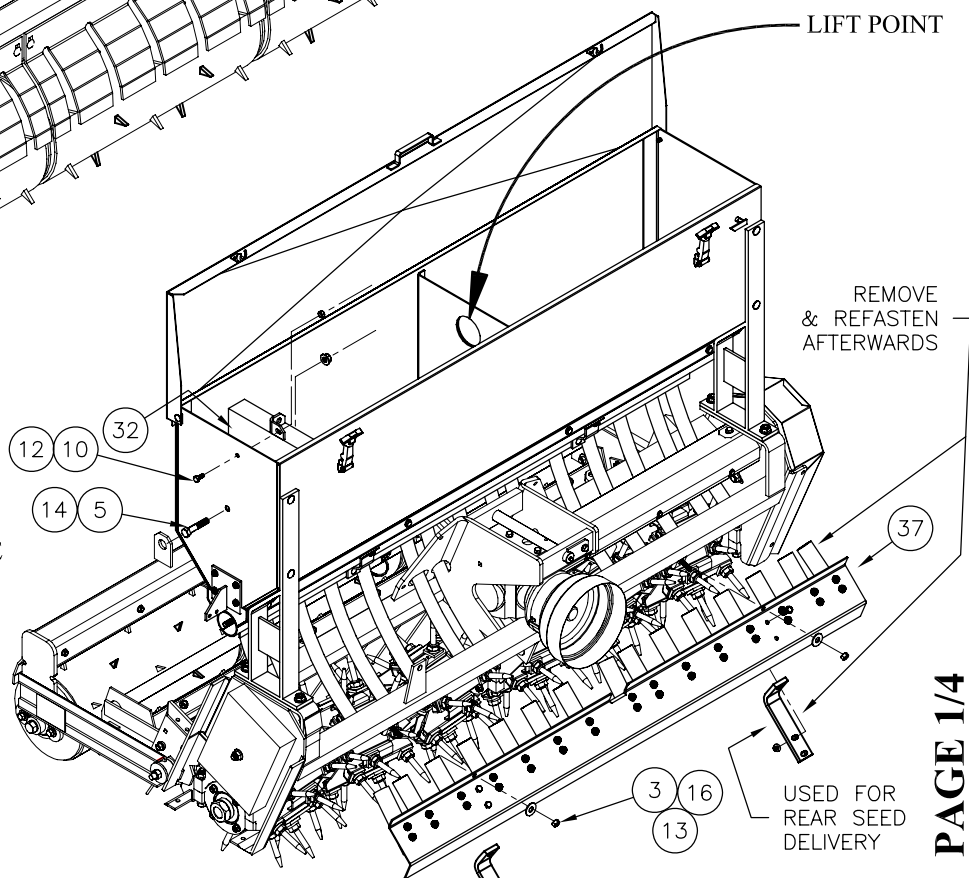
DIRECTIONS

(NOTE: A HOIST **MUST** BE USED FOR THIS ASSEMBLY)



- 1) PRE-ASSEMBLE HOSE AND HOSE CLAMPS, 22 & 26 RESPECTIVELY.
- 2) WITH HOPPER ASSEMBLY TURNED ON ITS BACK, ATTACH THE HOSES AS SHOWN, LEFT. USE SOAPY WATER AS A LUBRICANT TO HELP SLIDE THE HOSES ONTO THE SPOUTS. BE SURE TO USE THE NATURAL CURVE OF THE TUBE TO POINT IN THE DIRECTION THE SEED WILL GO, FRONT OR BACK OF MACHINE.
- 3) WITH LID OPEN, USE HOIST TO RAISE HOPPER ASSEMBLY (LIFT POINT SHOWN BELOW). SLOWLY LOWER THE HOPPER ASSEMBLY INTO PLACE WHILE ROUTING THE HOSES AROUND THE GEARBOX INTO THEIR PROPER ORIENTATION.
- 4) FASTEN HOPPER ASSEMBLY TO FRAME USING HARDWARE 8 & 14. IF THE HOPPER DOES NOT LINE UP WITH THE FRAME ACCORDINGLY, **LOOSEN** THE 3/8" CARRIAGE BOLTS HOLDING THE MOUNTING BRACKETS ON THE SEEDER TO ALLOW FOR EASIER ASSEMBLY. DON'T FORGET TO TIGHTEN THEM BACK AFTERWARDS!

- 5) WITH HOPPER ASSEMBLY FIRMLY SECURE, USE HOIST TO LIFT CHAIN DRIVE BALANCE WEIGHT, 32, AND SECURE IT WITH SHOWN HARDWARE 5, 10, 12, & 14.
- 6) REMOVE EXTENSION BRACKETS FROM BROADCAST BAR, 37, SHOWN RIGHT (SEE PAGE 4). FASTEN THE BROADCAST BAR, 37, TO THE FRAME AS SHOWN RIGHT USING HARDWARE 3, 13 & 16. THIS WILL REQUIRE MORE THAN ONE INDIVIDUAL FOR ASSEMBLY. IF THE HOSES INTERFERE WITH THE ASSEMBLY, IT MAY PROVE USEFUL TO REMOVE THE SPOUTS AND BRACKETS FASTENED TO THE BROADCAST BAR AND PLACING THEM BACK ON AFTER MOUNTING.



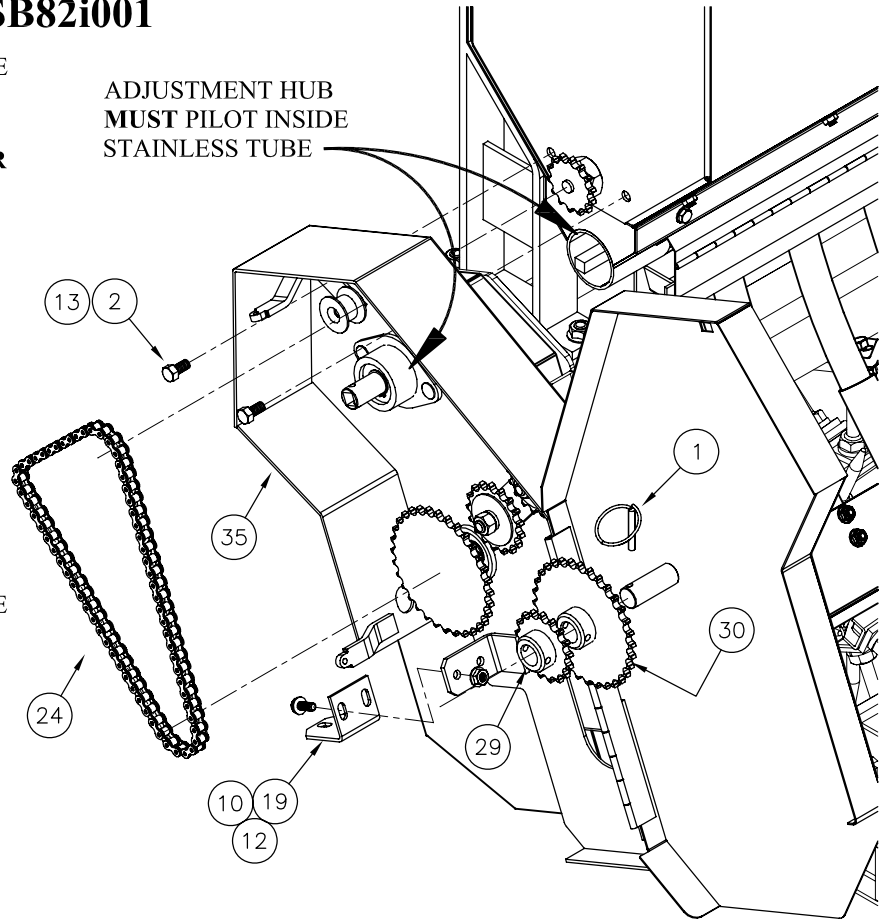
DEALER ASSEMBLY INSTRUCTIONS

SB82i001

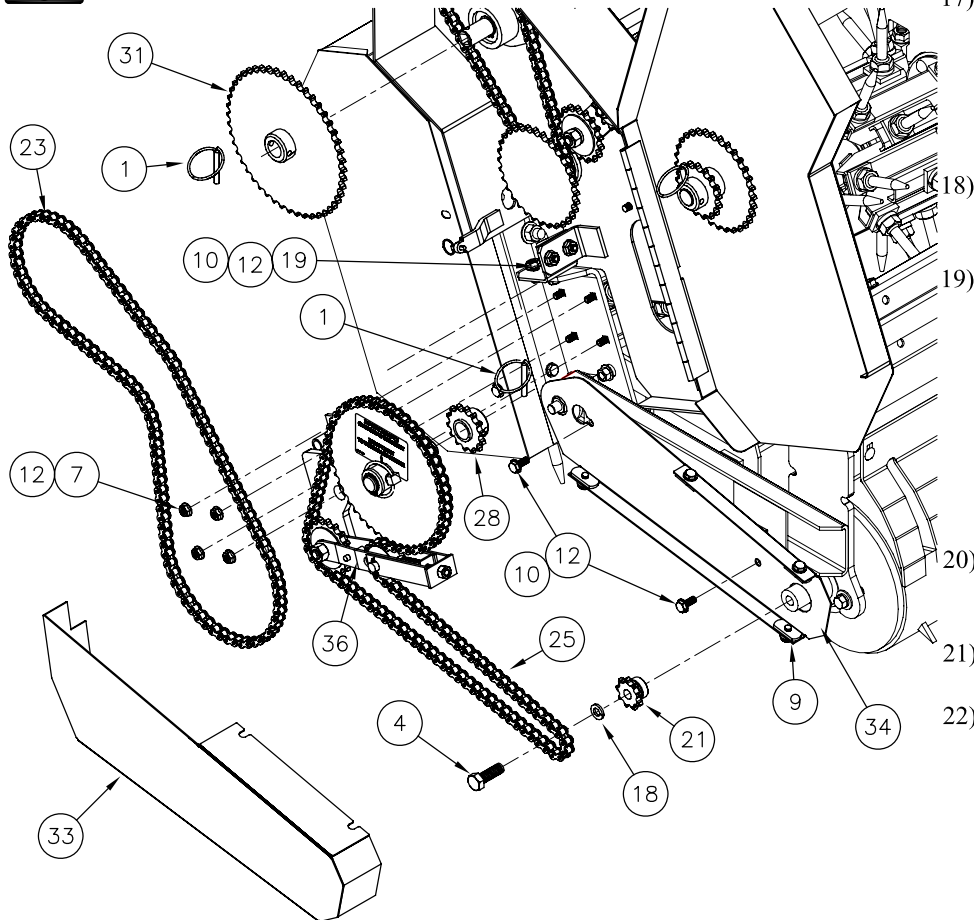
APPROACH THE TRAIN BASE ASSEMBLY AND NOTE THE ADJUSTMENT HUB, RIGHT. **IT IS CRITICAL TO UNDERSTAND THAT THE BACK PORTION OF THE HUB PILOTS INTO THE STAINLESS TUBE FOR PROPER FUNCTIONALITY.**

- 7) PUSH THE FEED WHEEL SHAFT BACK INTO THE STAINLESS TUBE TO PREVENT INTERFERENCE.
- 8) FASTEN THE TRAIN FRAME CONNECTOR, 19, TO THE TRAIN BASE, 35, USING HARDWARE 10 & 12 BUT DO NOT TIGHTEN.
- 9) SLIDE THE TRAIN BASE ASSEMBLY, 35, OVER THE SPROCKET ON THE HOPPER, AND PILOT THE ADJUSTMENT HUB INTO THE STAINLESS TUBE. FASTEN USING HARDWARE 2 & 13.
- 10) INSTALL THE 64 LINK CHAIN, 24, AND TIGHTEN THE IDLER BRACKET AS SHOWN ON PAGE 3.
- 11) FASTEN THE TRAIN FRAME CONNECTOR TO THE FRAME, 19, WITH HARDWARE 10 & 12 AND TIGHTEN THE REMAINING HARDWARE FROM STEP 8.
- 12) INSTALL ROLLER CHAIN BASE, 34, (BELOW) USING HARDWARE 10 & 12.
- 13) FASTEN IDLER CLUTCH ASSEMBLY, 36, TO FRAME USING HARDWARE 7 & 12.
- 14) FASTEN 9 TOOTH SPROCKET, 21, TO ROLLER SHAFT, BELOW, WITH HARDWARE 4 & 18.
- 15) ROUTE 119 LINK CHAIN, 25, AROUND SPROCKETS AS SHOWN ON PAGE 3. ADD HALF-LINKS, IF NECESSARY, AND CLOSE .

ADJUSTMENT HUB
MUST PILOT INSIDE
STAINLESS TUBE



TIGHT CHAIN WILL DAMAGE DRIVE TRAIN AS ROLLER PIVOTS.



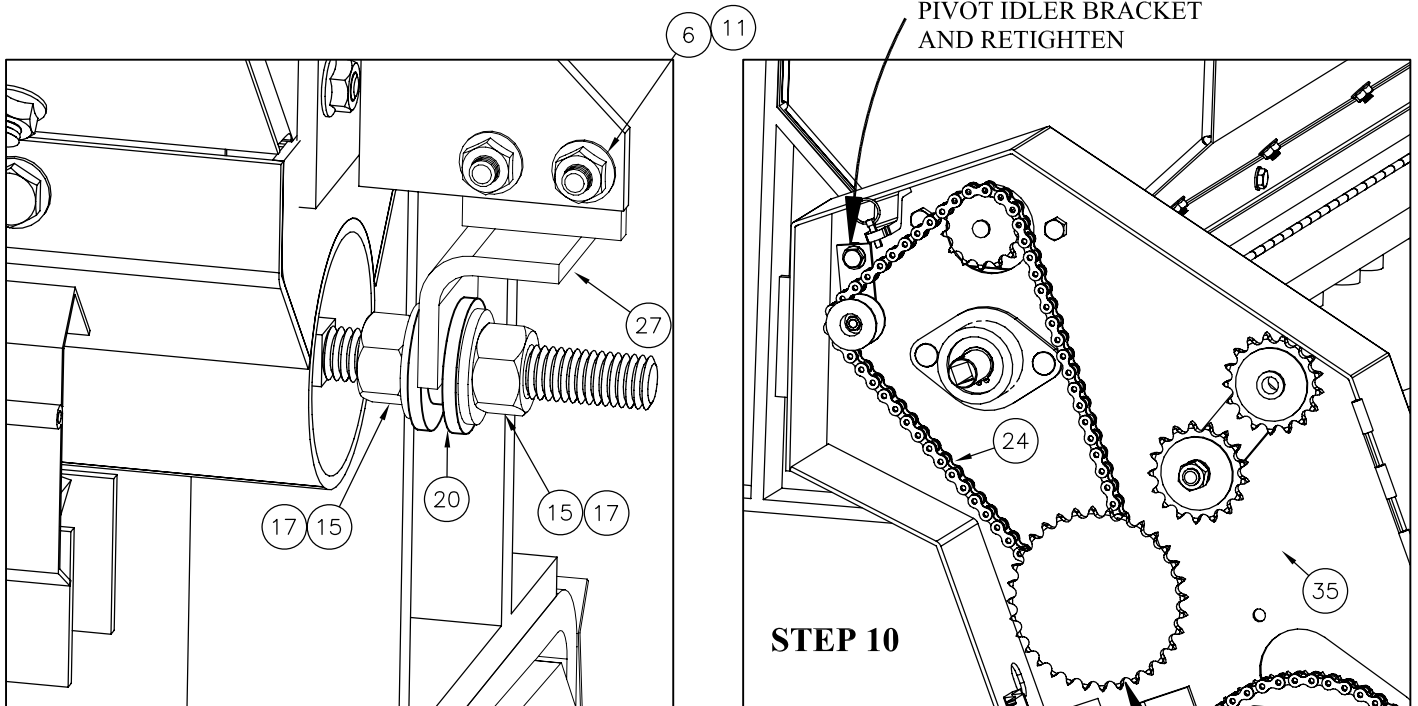
- 16) INSTALL ROLLER CHIAN COVER, 33 USING HARDWARE 9.
- 17) MOUNT BLACK SPROCKETS AS SHOWN: 31 ON DRIVE SPINDLE, 28 ON IDLER CLUTCH ASSEMBLY (INSIDE), AND THE TWO REMAINING , 29 & 30, ON BANK SHAFT INSIDE COVER. USE 1/4" LYNCH PIN, 1, TO RETAIN SPROCKETS.
- 18) INSTALL THE 111 LINK CHAIN, 23, AS PICTURED ON THE CALIBRATION DECAL INSIDE THE TRAIN BASE COVER.
- 19) INSERT FEED WHEEL SHAFT (SQUARE SHAFT INSIDE STAINLESS TUBE) INTO DRIVE SPINDLE (INSIDE ADJUSTMENT HUB). NEW FEED WHEEL SHAFTS ARE NATURALLY TIGHT, THUS A SMALL WRENCH CAN BE USED TO ROTATE THE SHAFT WHILE PUSHING IT IN THE STAINLESS TUBE AND INTO THE DRIVE SPINDLE.
- 20) INSTALL HARDWARE 15& 17 WITH ADJUSTMENT BEARING, 20, ON SHAFT AS SHOWN ON PAGE 3.
- 21) INSTALL METERING ADJUSTMENT BRACE, 27, WITH HARDWARE 6 & 11.
- 22) MAKE SURE BEARING TURNS INSIDE METERING ADJUSTMENT BRACE.

DEALER ASSEMBLY INSTRUCTIONS

SB82i001

ITEM	PART NO	DESCRIPTION	QTY	ITEM	PART NO	DESCRIPTION	QTY
1	AE50-149	1/4 LYNCH PIN	3	20	SB50-004	ADJUSTMENT BEARING	1
2	HW01012024G5ZPC	3/8 X 3/4 HHCS	2	21	SB50-020	#40 TYPE B 9 TOOTH SPROCKET	1
3	HW01012040G5ZPC	3/8 X 1 1/4 HHCS	2	22	SB50-032	1" OD X 1 1/4" ID CVT	15
4	HW01016056G5ZPC	1/2 X 1 3/4 HHCS	1	23	SB50-056	#40 CHAIN X 111 LINKS	1
5	HW01016096G5ZPC	1/2 X 3 HHCS	1	24	SB50-057	#40 CHIAN X 64 LINKS	1
6	HW03008024G5ZPC	1/4 X 3/4 CARRIAGE BOLT	2	25	SB50-058	#40 CHAIN X 119 LINKS W/ CON.	1
7	HW03010024G5ZPC	5/16 X 3/4 CARRIAGE BOLT	4	26	SB50-062	1 3/8 HOSE CLAMP	15
8	HW03016040G5ZPC	1/2 X 1 1/4 CARRIAGE BOLT	4	27	SB80-015	METERING ADJ. BRACE	1
9	HW06010016G5ZPC	5/16 X 1/2 FLANGE LOCKSCREW	4	28	SB80-018	14 TOOTH TRAIN SPROCKET	1
10	HW06010024G5ZPC	5/16 X 3/4 FLANGE LOCKSCREW	7	29	SB80-019	17 TOOTH TRAIN SPROCKET	1
11	HW22008G5ZPC	1/4 FLANGE LOCKNUT	2	30	SB80-020	32 TOOTH TRAIN SPROCKET	1
12	HW22010G5ZPC	5/16 FLANGE LOCKNUT	11	31	SB80-021	48 TOOTH TRAIN SPROCKET	1
13	HW22012G5ZPC	3/8 FLANGE LOCKNUT	4	32	SB80-027	CHAIN DRIVE BALANCE WEIGHT	1
14	HW22016G5ZPC	1/2 FLANGE LOCKNUT	5	33	SB80-028	ROLLER CHAIN COVER	1
15	HW25016G5ZPC	1/2 JAM NUT	2	34	SB80-029	ROLLER CHAIN BASE	1
16	HW30012G5ZP	3/8 FLAT WASHER	2	35	SB81-001	TRAIN BASE ASSY	1
17	HW31016TAZP	1/2 SAE FLATWASHER	2	36	SB81-002	IDLER CLUTCH ASS'Y	1
18	HW32016G5ZP	1/2 LOCKWASHER	1	37	SB81-016	TUBE BAR - 60	1
19	SB23-026	TRAIN FRAME CONNECTOR	1	38	SB81-007	HOPPER ASSY - 60	1

LOOSEN BOLT TO PIVOT IDLER BRACKET AND RETIGHTEN



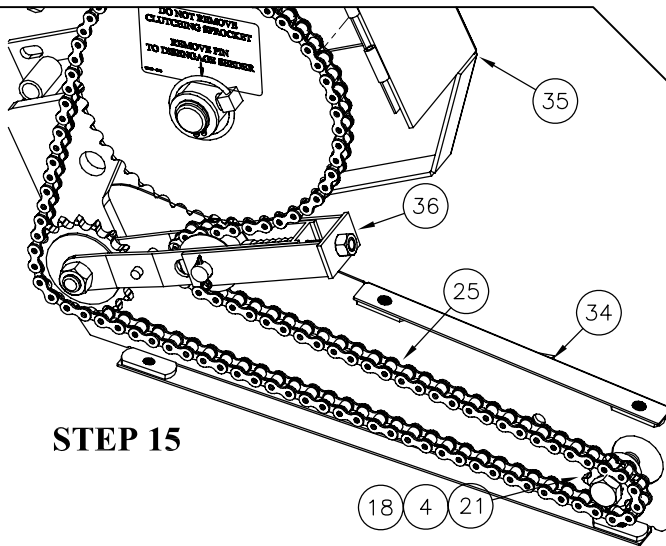
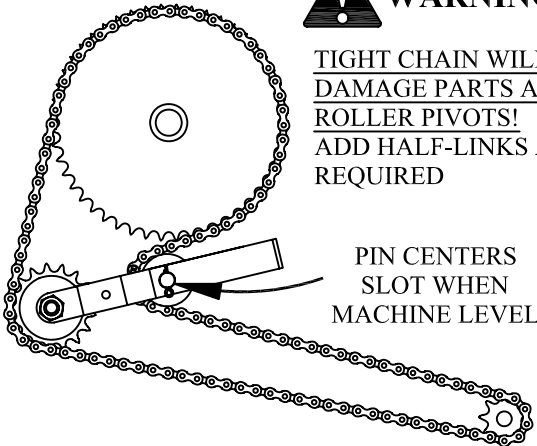
STEP 20 - 22

STEP 10

WARNING

TIGHT CHAIN WILL DAMAGE PARTS AS ROLLER PIVOTS! ADD HALF-LINKS AS REQUIRED

PIN CENTERS SLOT WHEN MACHINE LEVEL

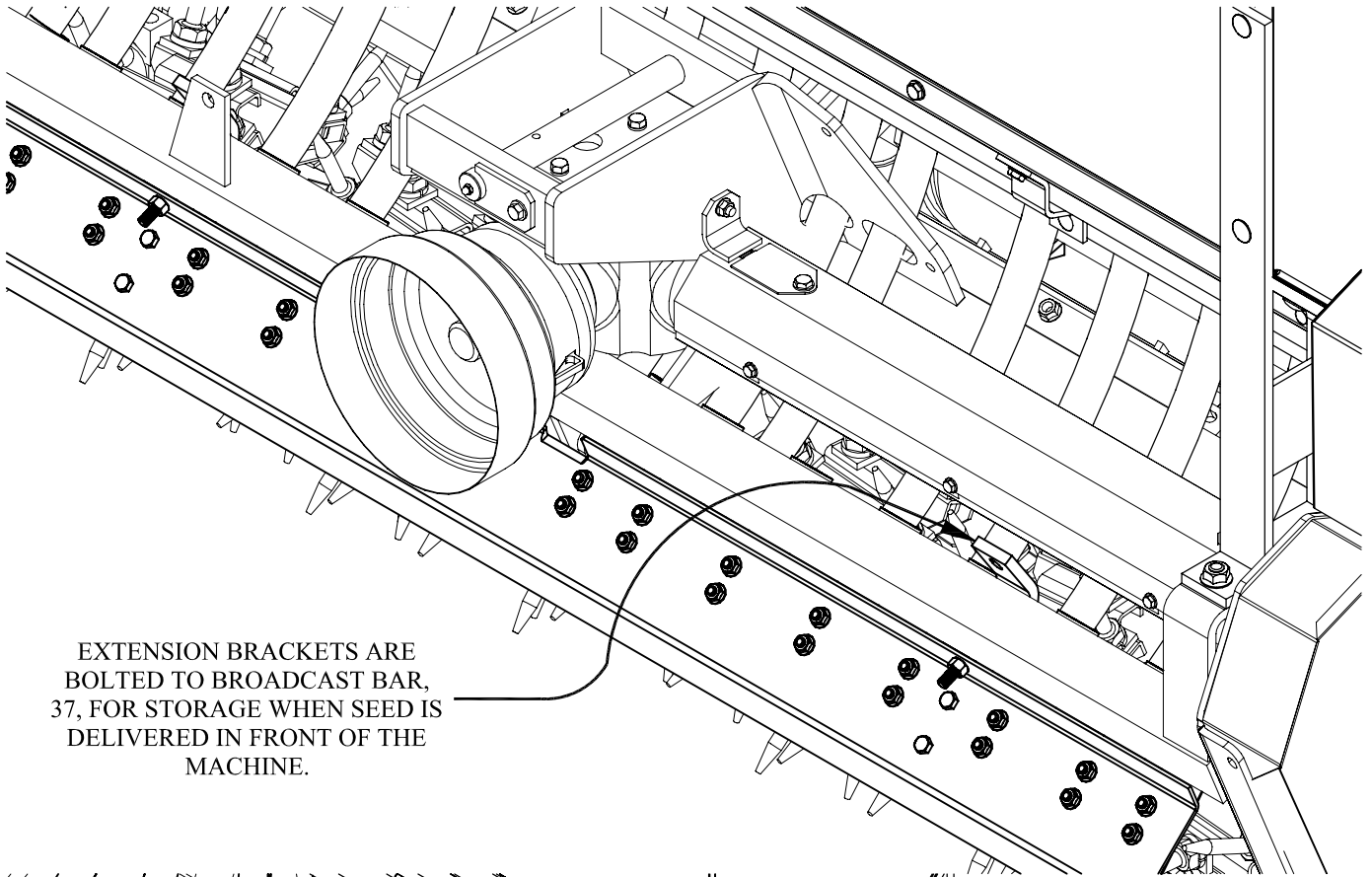


ALIGN WITH SMALLER SPROCKET OF CLUSTER AS SHOWN

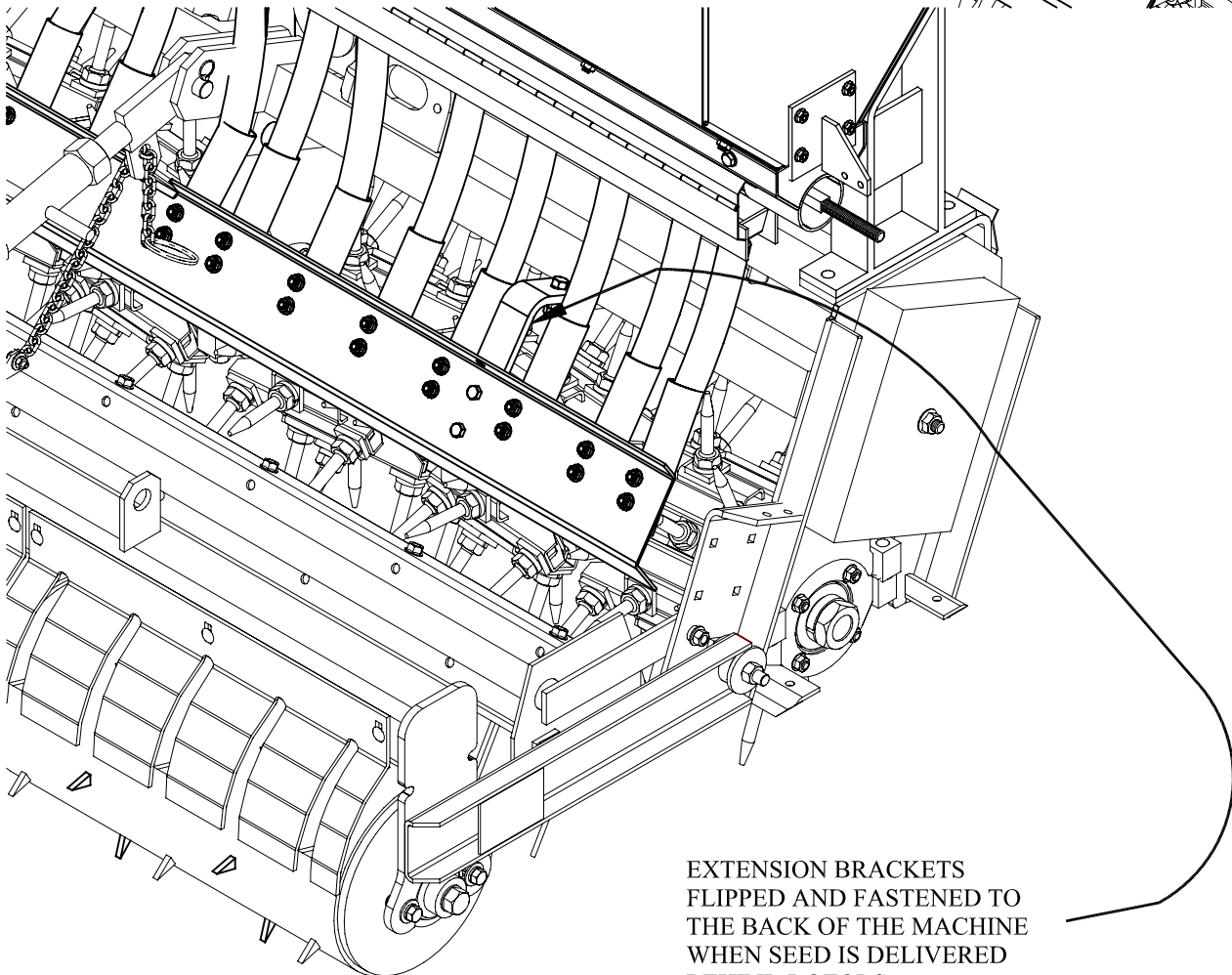
STEP 15

DEALER ASSEMBLY INSTRUCTIONS

SB82i001



EXTENSION BRACKETS ARE BOLTED TO BROADCAST BAR, 37, FOR STORAGE WHEN SEED IS DELIVERED IN FRONT OF THE MACHINE.



EXTENSION BRACKETS FLIPPED AND FASTENED TO THE BACK OF THE MACHINE WHEN SEED IS DELIVERED BEHIND ROTORS